



SOLVAY

asking more from chemistry®

Metallographic
Examination



Corrosion
Testing

Flame
Brazing



Flux

Aluminium
Brazing



NOCOLOK®



NOCOLOK®
**Technical Brazing Center
and Technical Service**

The NOCOLOK® Brazing Technical Center

NOCOLOK® flux brazing technology is the industry standard for brazing aluminum heat exchangers and other components.

Solvay Fluor has further strengthened its technical assistance support with the implementation of a Brazing Technical Center.

The Technical Center is equipped to fulfill many possible customer requests from cleaning and degreasing, to fluxing and brazing, and on to post braze evaluations such as corrosion testing and metallographic examinations. The Technical Center is at your service for all your NOCOLOK® brazing needs.

Objective

- To meet customer requests in trouble shooting for NOCOLOK® brazing.
- To demonstrate to prospective customers NOCOLOK® flux brazing technology.
- To assist in prototype development.
- Development of improved fluxes.



NOCOLOK®
is a registered trademark
of Solvay Fluor GmbH

Cleaning



The first step in any successful brazing operation is the removal of residual lubricants and forming oils. With a view towards more environmentally friendly degreasing methods, an aqueous degreasing station is available. Here various cleaning methods and aqueous degreasing agents can be evaluated to suit your particular needs. A drying furnace normally used for predrying fluxed parts can also be used to evaluate thermal degreasing methods.



Controlled Atmosphere Aluminium Brazing in a Laboratory Glass Furnace

Purpose

Testing brazing characteristics and properties for different material combinations and process conditions.

Procedure

A standard brazing test configuration consisting of an Al base coupon (25 mm x 25 mm) on which an angled Al strip is placed are coated with flux dried and brazed in a laboratory glass furnace. The brazing process can be filmed (video recorded) upon request.

The furnace heating control allows different linear heating rates and dwell times at any temperature to be applied.

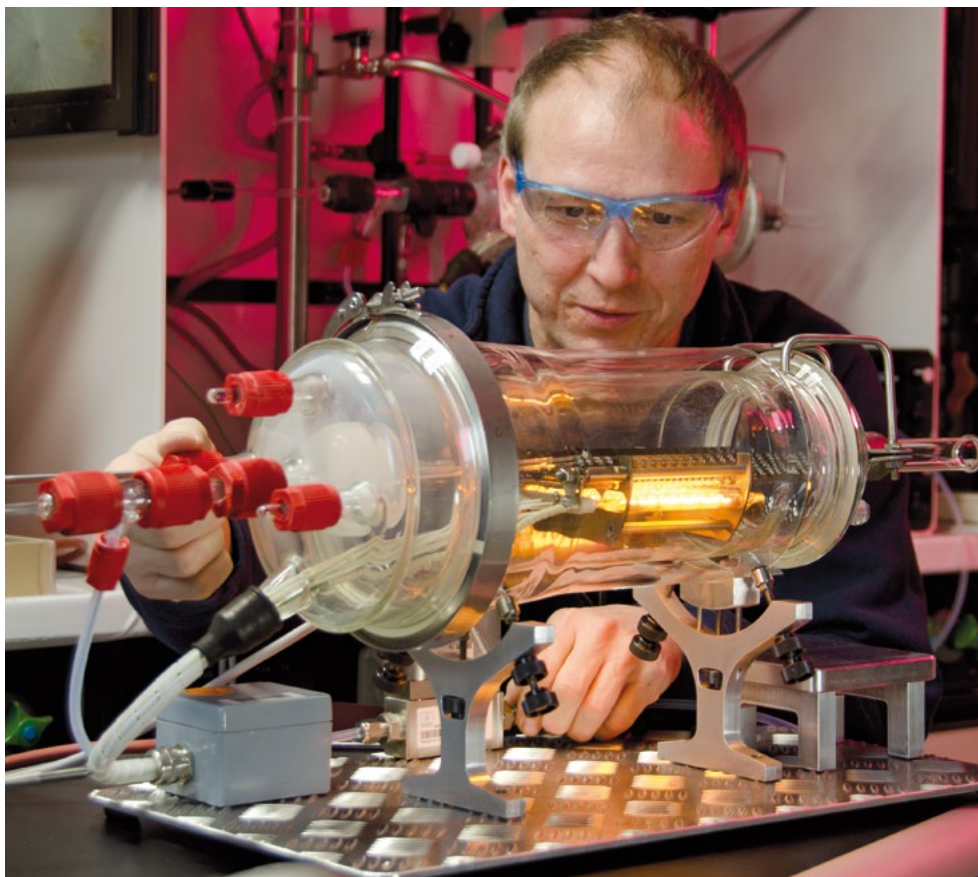
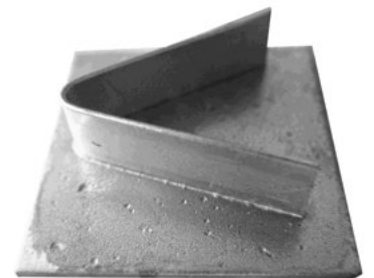
Example for brazing heating profile

Heating rate – 30°C/min up to 605°C
Dwell time – 2 minutes at 605°C,
Cooling rate – approx. 30°C/min

The single unit test involves the following:

Preparation of brazing sample (one coupon and one angle), coating of sample with flux (Solvay's material and the clients materials can be used), brazing, optional recording in real time and report.

Brazing is evaluated on a scale of 1 to 5 using a set standard of brazing criteria.



Metallographic Examination

Purpose

To observe under an optical microscope the metallographic features of the test materials, for example to evaluate brazing quality, joint geometry, progress of corrosion, etc.

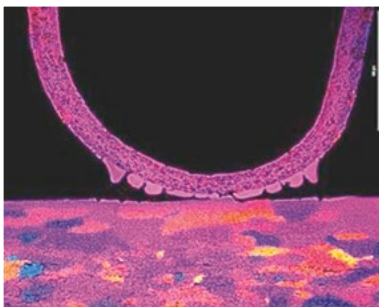
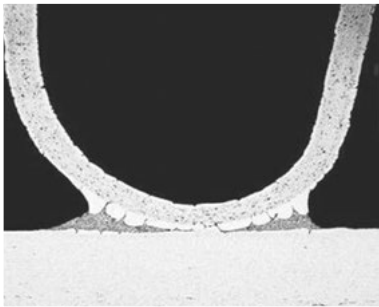
Procedure

Depending on the sample, an appropriate cross section is chosen and cut either with a band saw or with a high precision cutting wheel machine.

The sections are embedded in epoxy resin and gradually ground and polished to a mirror-like surface.

The cross section can be observed and photographed under either non etched or etched conditions. Optionally, special electrochemical etching can be carried out to reveal the grain structure.

The results of optical microscope observations are summarized in a report including some interpretations of the observed microstructural features.



Single cross section means examination with several photographs and different etching techniques.



Flame Brazing

Purpose

Testing the characteristics and properties of different material and flux combinations under flame brazing conditions.

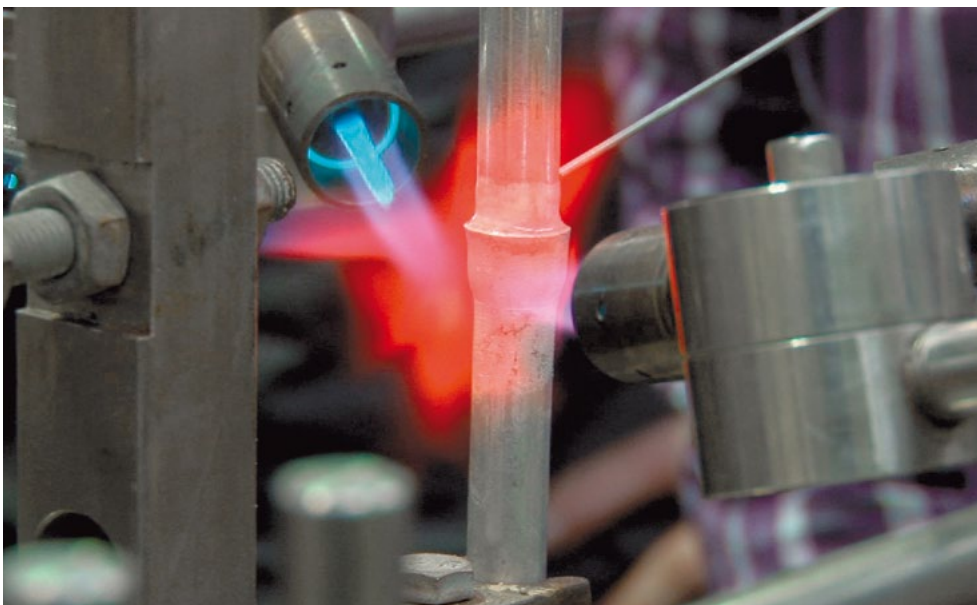
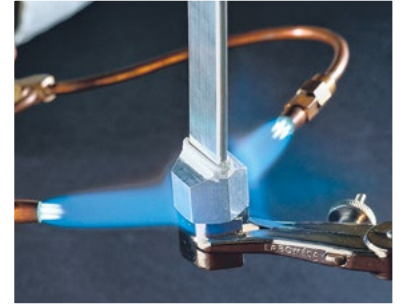
Procedure

The components to be joined are first cleaned and then assembled and fixtured. Filler alloy is added in the form of brazing paste, brazing rings or brazing wire.

Fluxing paste is applied manually by brush to the joint area.

After fluxing, the parts are heated with an open propane-butane flame. Operation of the flame is manual.

Several different filler alloy material combinations like Al-Al, Al-Cu, Al-Steel and various fluxes are possible.



Controlled Atmosphere Aluminium Brazing in Batch Type Furnace



Purpose

Brazing trials for single or small numbers of units, e.g. prototypes or mock up components. It offers a means of simulating the whole production process starting with part assembly, fluxing (wet and electrostatic methods are possible) and brazing.

The size of the brazing chamber and other equipment makes it possible to braze standard-size heat exchangers.

Procedure

The components are cleaned by aqueous washing, then assembled and fluxed in either a wet spray or electrostatic chamber. Other fluxing alternatives like pre-fluxing with a mixture of flux and binder are also possible. The details of the fluxing process are individually chosen depending on the part design and customer requirements.

Brazing is performed under nitrogen atmosphere in a batch type furnace. The length of time the parts are heated closely matches typical heating rates seen in industry.



Scanning Electron Microscopy Energy Dispersion X-ray Examination and Mapping

Purpose

To investigate sample surface morphology and to determine presence and distribution of different chemical elements.

Procedure

Procedure covers: preparation of the sample (cutting), electron microscope analysis, element mapping, report

The scanning electron microscope (SEM) is a type of electron microscope that images the sample surface by scanning it with a high-energy beam of electrons in a raster scan pattern. SEM-EDX is the name of the energy-dispersive X-ray spectroscopy analysis conducted by means of SEM.

Energy dispersive X-ray spectroscopy (EDS, EDX or EDXRF) is an analytical technique used for the elemental analysis or chemical characterization of a sample.



Post braze flux residue SEM/EDX analysis elemental mapping (Al, Mg, Si, F, K).

SEM image



50 μm

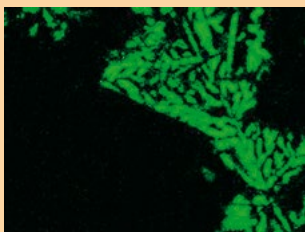
Aluminum



Magnesium



Silicon



Fluorine



Potassium



Pre-fluxing by the Atomized Spray Method

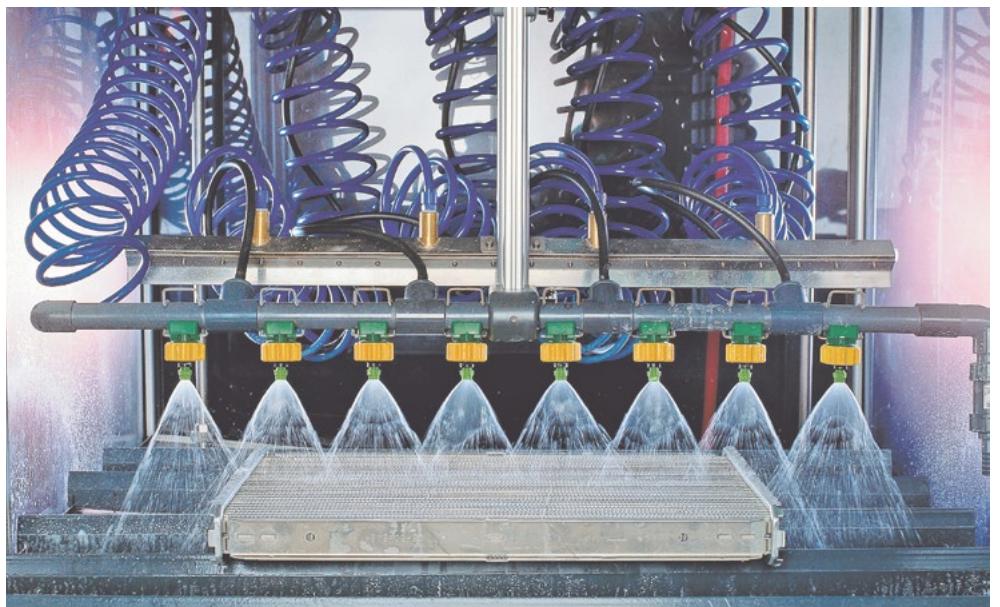
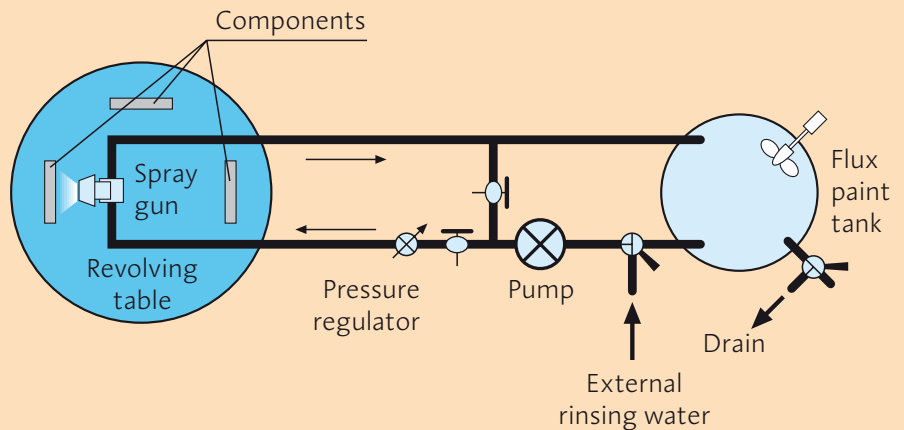


Purpose

To pre-flux sample parts – either on the complete surface or selected surface areas. Different types of flux and binder mixtures can be used. Manual and semi-automated pre-fluxing is possible. Optimal binder and mixture compositions for customer specific parts and brazing configurations can be evaluated.

Procedure

The components are pre-fluxed using manual or semi-automatic equipment which ensures uniform coating and control of the load. By changing the table's rotational speed, the spraying time for the parts can be varied, thus changing the paint load. Constant rotational speed and a fixed setting of the spray gun ensure repeatability during testing. The design of the equipment makes it possible to paint large quantities of parts, even up to a few hundred per working day.





Europe

Solvay Fluor GmbH
Postfach 220
30002 Hannover, Germany
Telephone: +49 511 857-0
Fax: +49 511 857-2146

North America

Solvay Fluorides, LLC
3333 Richmond Avenue
Houston, TX 77098, USA
Telephone: +1 713 525-6000
Fax: +1 713 525-7805

Asia/Pacific

Solvay Korea CO., LTD
5th Fl. Donghwa Bldg.58-7,
Seosomun-Dong, Jung-Gu
Seoul, 100-736, Korea
Telephone: +82 2 751 3509
Fax: +82 2 751 3576

31/399/09:13/007/XXX

www.solvay.com

Disclaimer:

All statements, information, and data given herein are believed to be accurate and reliable but are presented without guarantee, warranty or responsibility of any kind, express or implied. Statements or suggestions concerning possible use of our products are made without representation or warranty that any such use is free of patent infringement, and are not recommendations to infringe any patent. The user should not assume that all safety measures are indicated, or that other measures may not be required. In any case, the user is not exempt from observing all legal, administrative and regulatory procedures relating to the product, personal hygiene, and protection of human welfare and the environment.